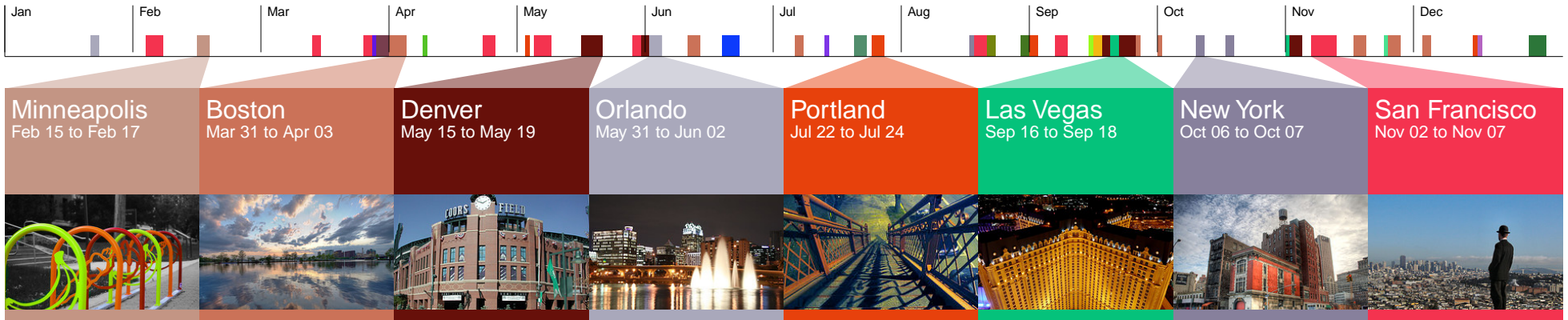
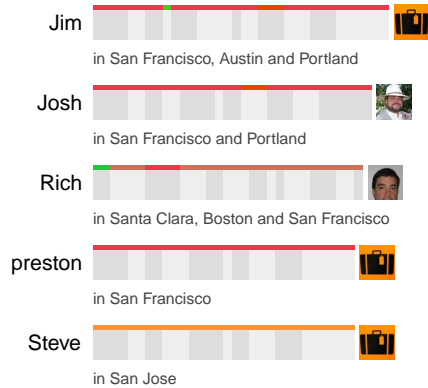


# 2008 Personal annual report for Stephen O'Grady



You took 48 trips in 2008, which added up to 115,365 km or 31% of the distance to the moon.

In 2008, you mostly coincided with:



In 2008, you spent



You have 150 travellers in your network. They travelled a total of 9,788,696 km in 2008, and everyone on Dopplr travelled a total of 1331.4 million km or 8.9 AU in 2008: the approximate distance to Saturn from the Earth as of January 2009.

Your personal velocity for 2008 was 13.16 km/h, which is about the same as a house mouse.

The 5 most popular cities in your network are San Francisco, London, New York, Menlo Park and Portland.

The furthest distance you travelled was to Wellfleet (4,430 km from San Francisco). The shortest distance you travelled was to Portland (44 km from Georgetown), which is the 320th most popular city on Dopplr.

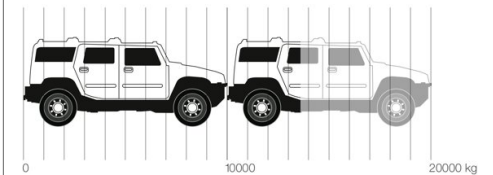


The Dopplr Raumzeitgeist: Where Stephen has been

You spent the longest in San Francisco, Maggie Chen has a tip:

Kitaro, on Geary, for cheap and fresh sushi. Naan n Curry, on Irving, for cheap and spicy Indian food. Shalimar (I prefer the Polk location), also for Indian. See more on the city page for San Francisco on Dopplr.

Your carbon for 2008



13,712 kg CO2

Based on figures from Fueleconomy.gov, 1 x Hummer H3 4WD truck produces nearly 10 metric tonnes of CO2 a year. The visualisation above uses this figure to illustrate your carbon from Dopplr as calculated by our friends at <http://amee.cc> and is an approximation only.